



the evolution of  
**URBAN MOBILITY**

by

Nils Wuytens





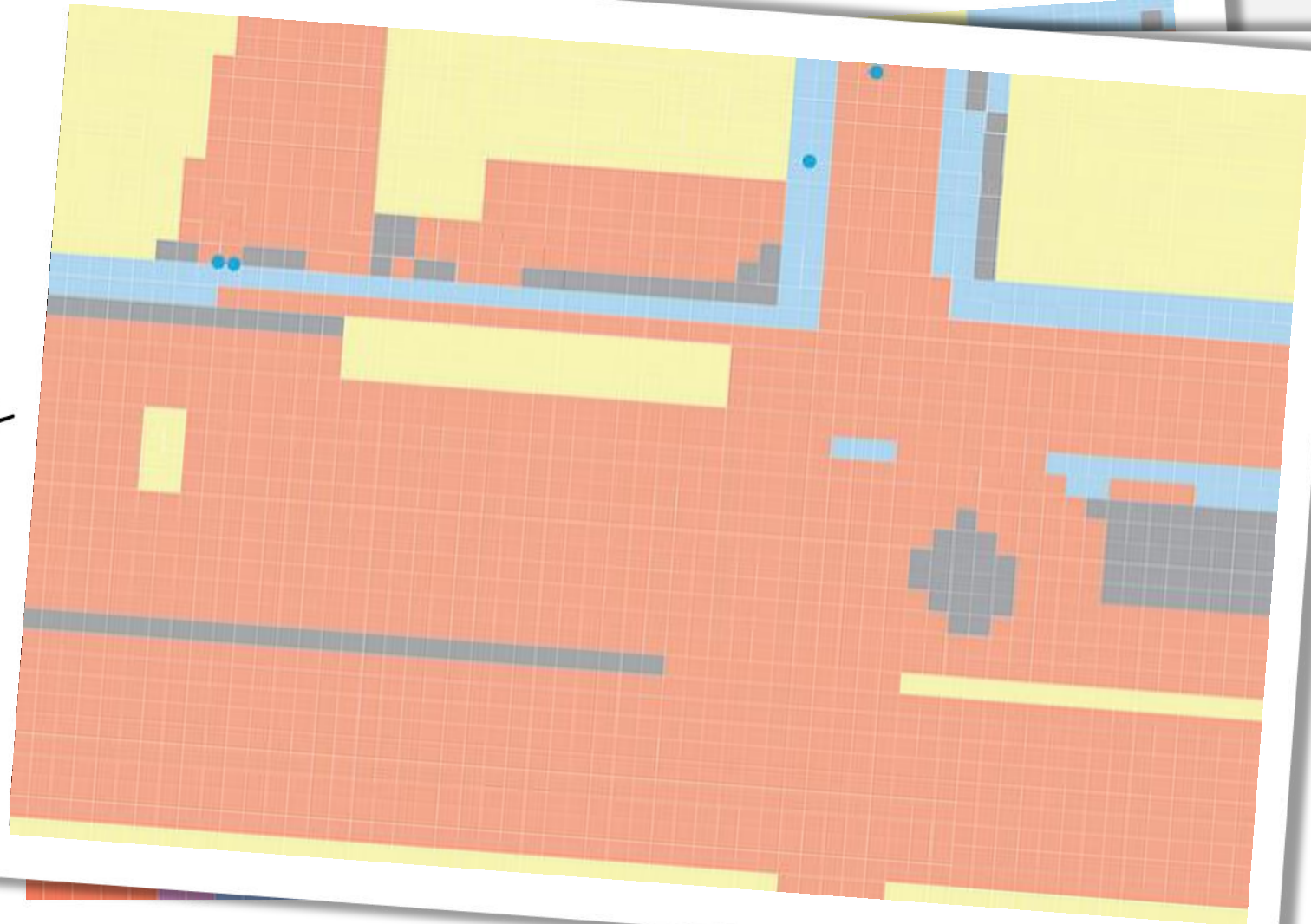
# DISRUPTED CITIES





# The arrogance of **SPACE**

*Calgary*



# Disturbance in the **FORCE**





All Transportation is Local by **TRANSITCENTER (2017)**





All Transportation is Local by **TRANSITCENTER (2017)**



*All Transportation is Local by* **TRANSITCENTER (2017)**





All Transportation is Local by **TRANSITCENTER (2017)**

# United Kingdom

## LONDON





Spain

# BARCELONA



DOM CARRIERS

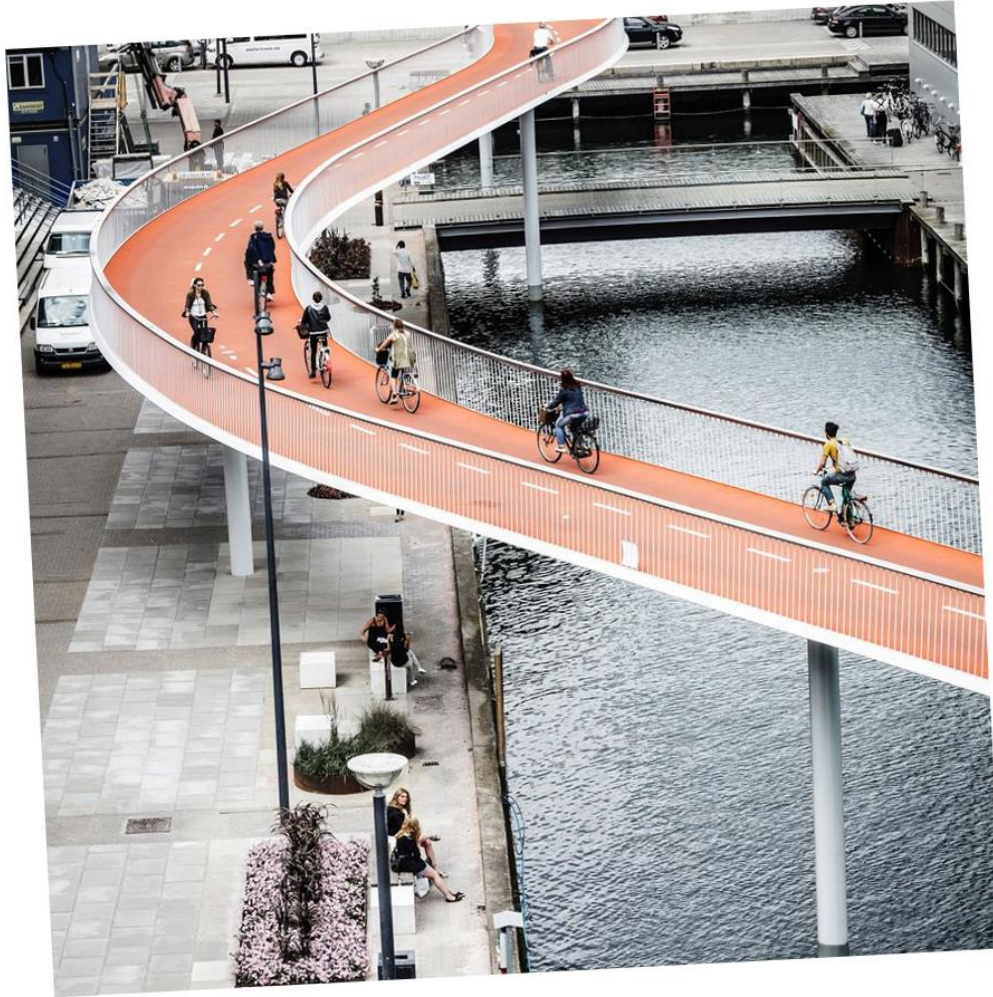
BASIC TRAFFIC NETWORK

SINGLE PLATFORM (PEDESTRIANS PRIORITY)



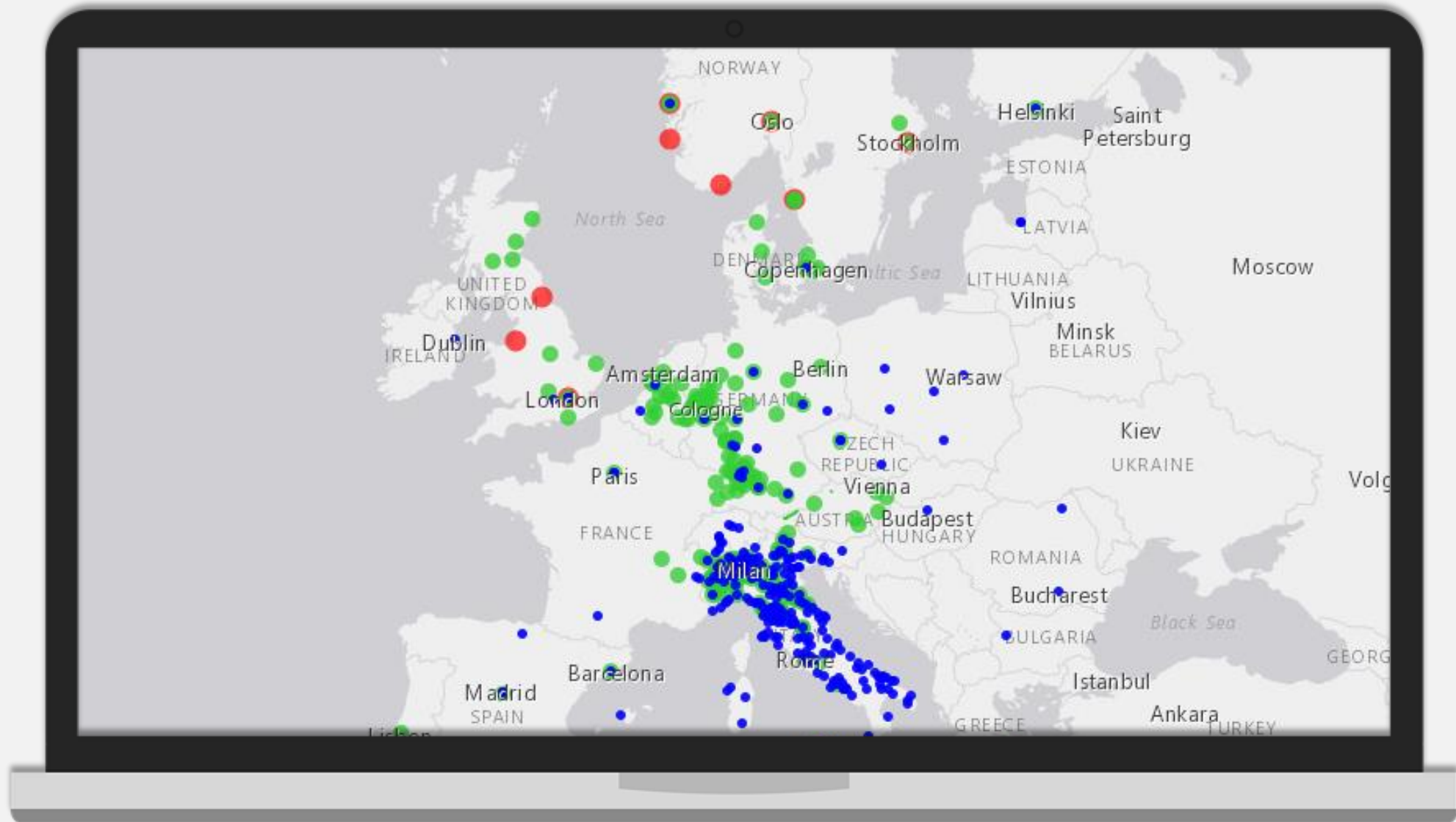
# Denmark

## COPENHAGEN





# Urban access **REGULATIONS**



# New mobility **APPS**



Car2go



URB-E



Blacklane



Lecab



Transit



Rideamigos



Talixo



Carforce



Google Maps



Waze Carpool



Snapcar



Ofo



Tripdrive



Wheely



Kabbee



Gettaxi



Djump



Artemis



Uber



Urgent.ly



Ryde



Parkd



Commuty



Zipcar



Maven



Blablacar



Buzzcar



Ants



Limebike



Kowo



Carma



Cabify



Comodule



Taxibeat



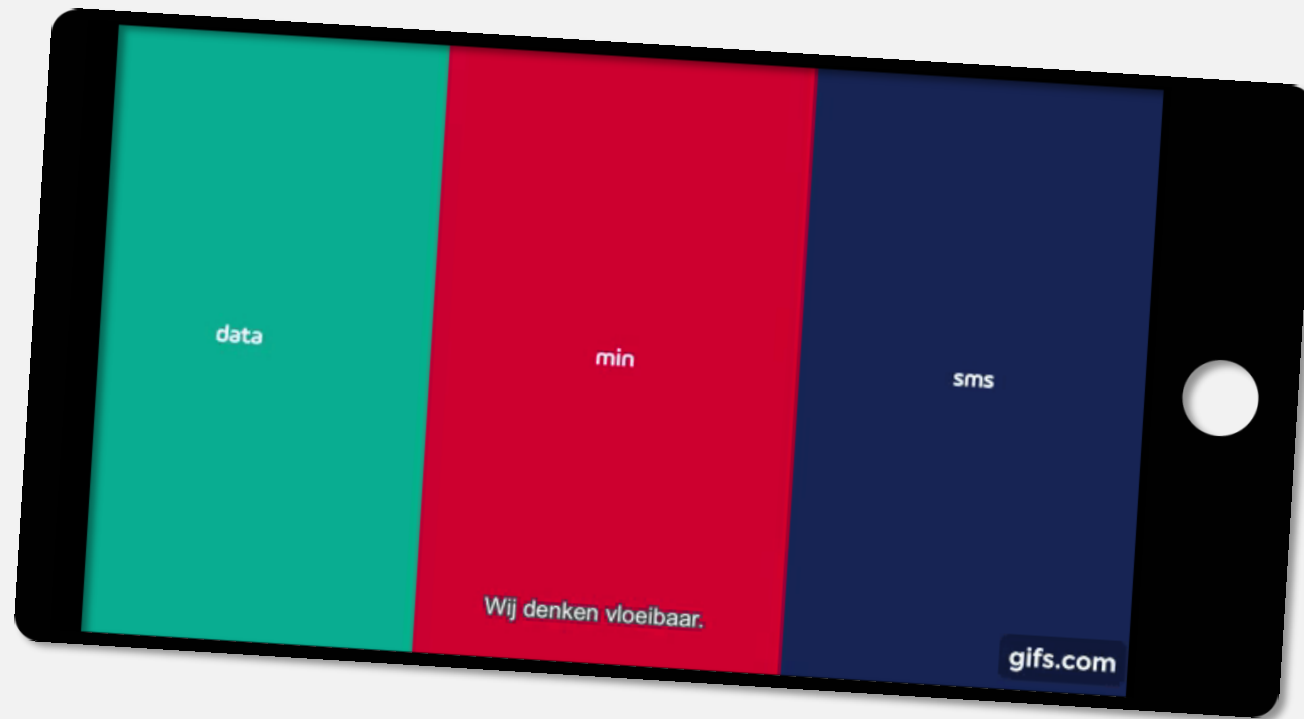
Whim



Fline



# A revolution in **URBAN MOBILITY**



# MaaS

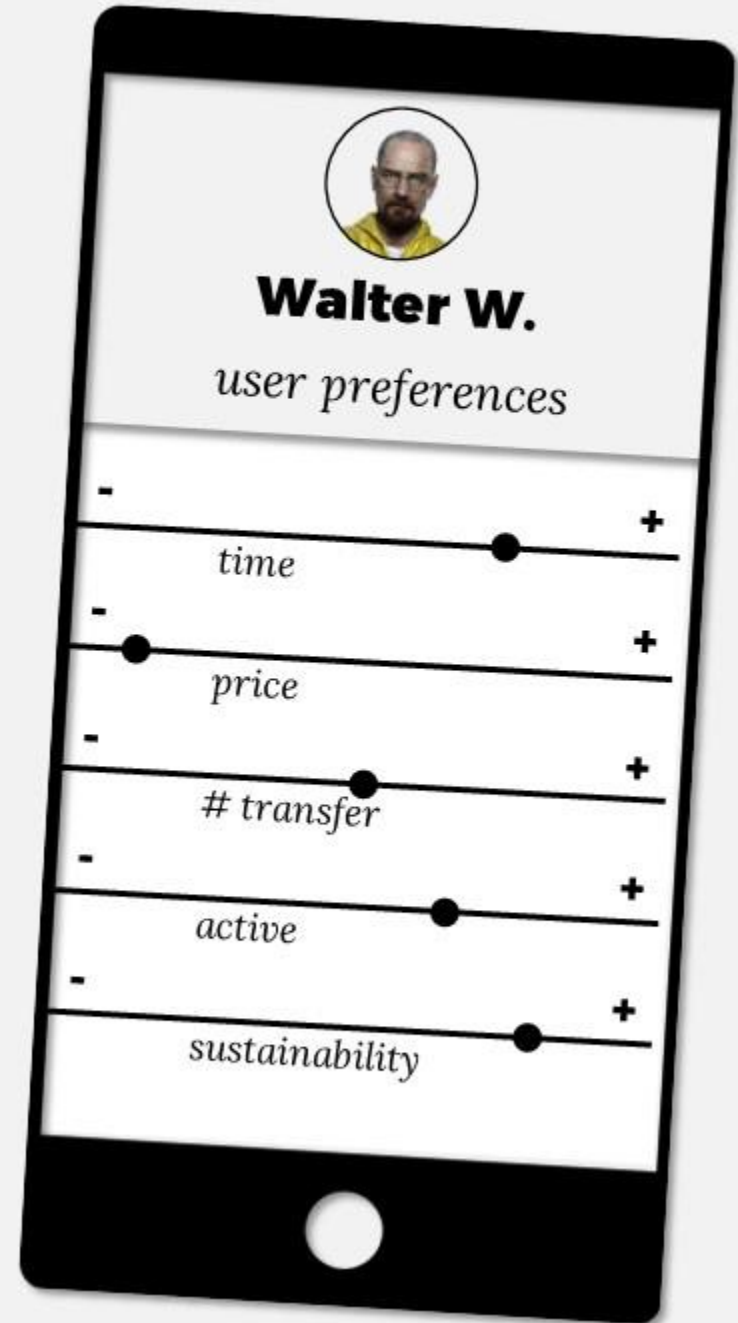


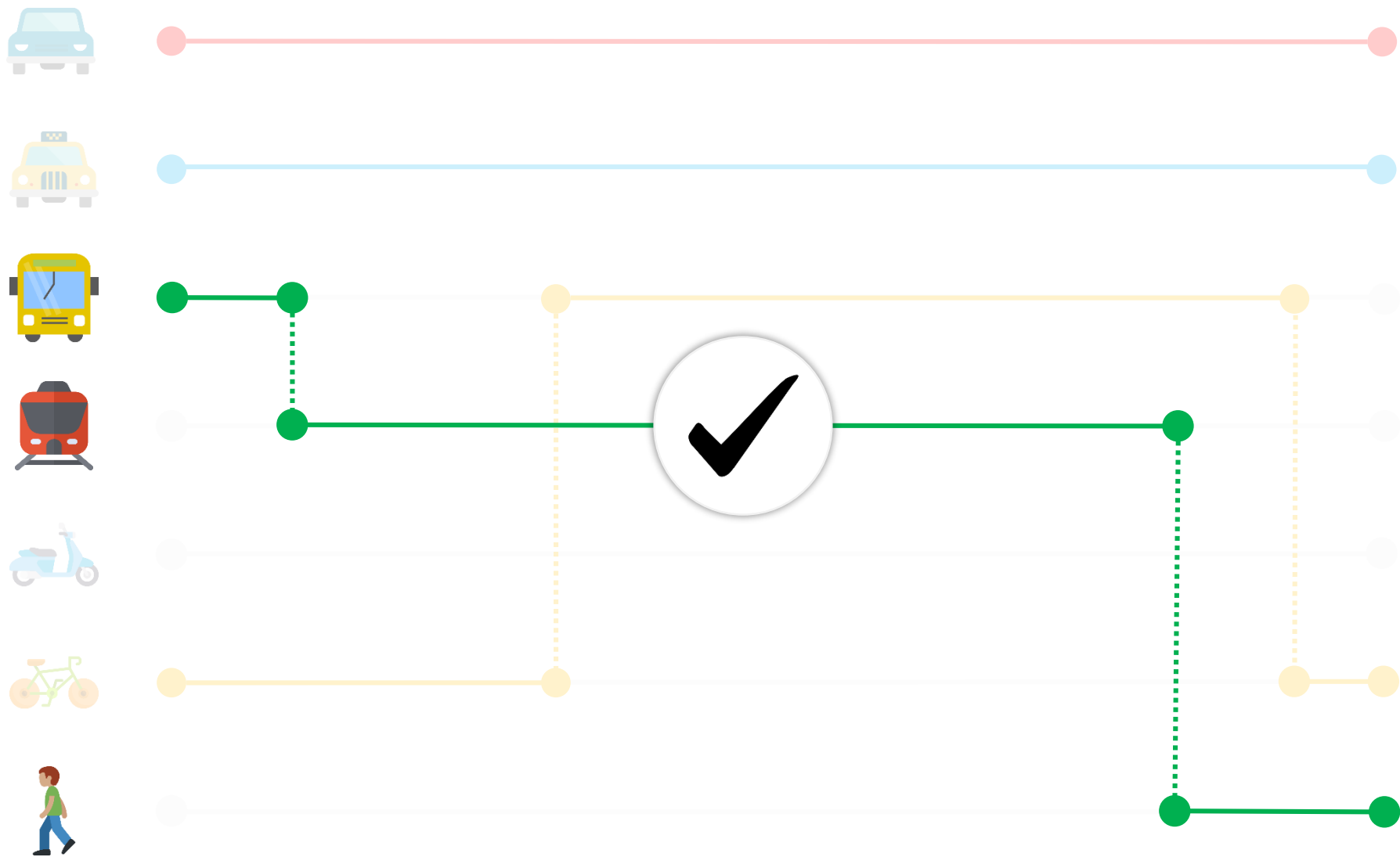
” A personal mobility package adapted to individual transport demand, based on a technological model.





**MaaS** *user*









**MaaS** *provider*



## **TRANSPORT PROVIDERS**



*Public transport and  
new mobility solutions*

## **LOCAL GOVERNMENTS**



*Cities and  
municipalities  
collaborate with each  
other and offer their  
services to different  
MaaS providers*

## **PAYMENT SYSTEMS**



*One single payment  
system, based on two  
tariff plans, pay-as-  
you-go and a monthly  
subscription*

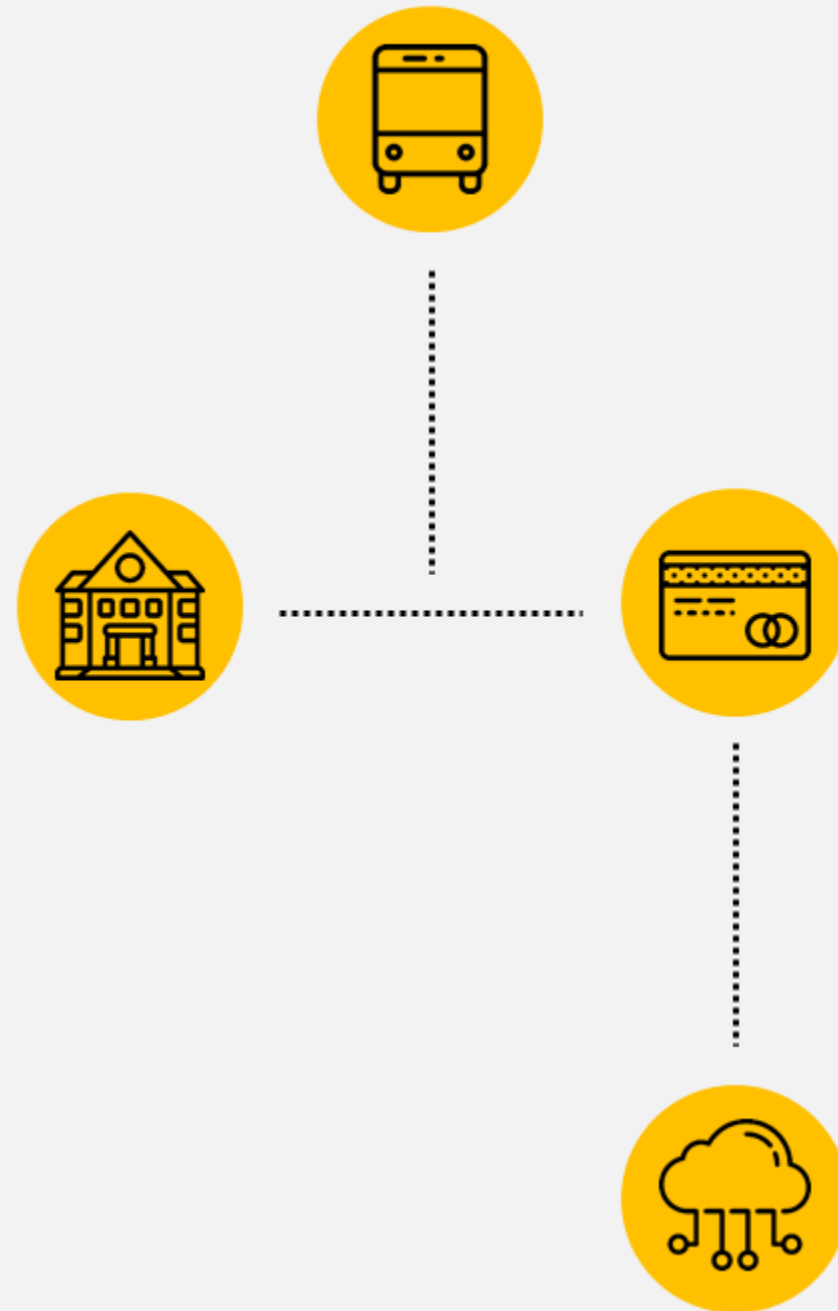
## **DATA PROVIDERS**



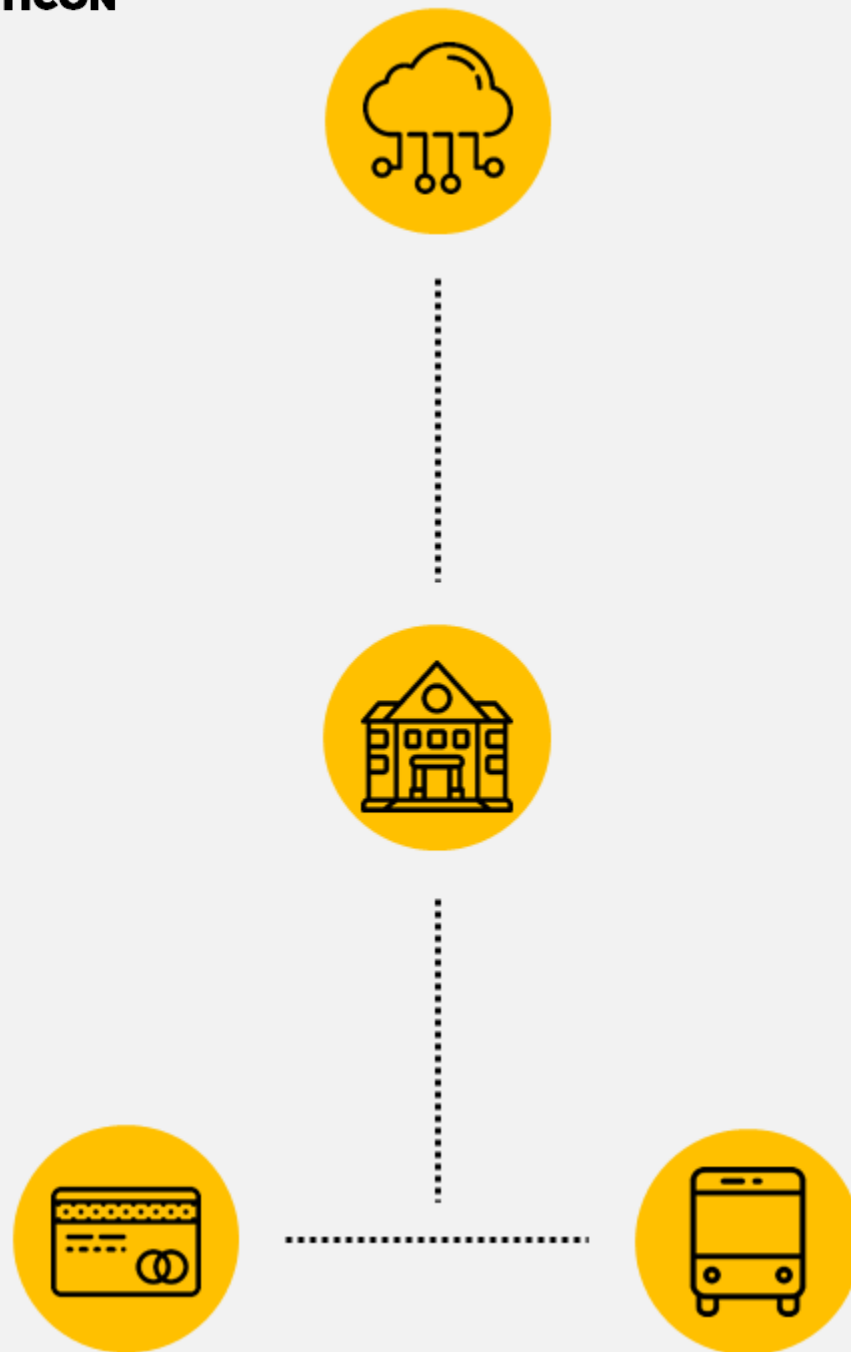
*Who is responsible?  
What is the price of  
data?  
Standardisation?*

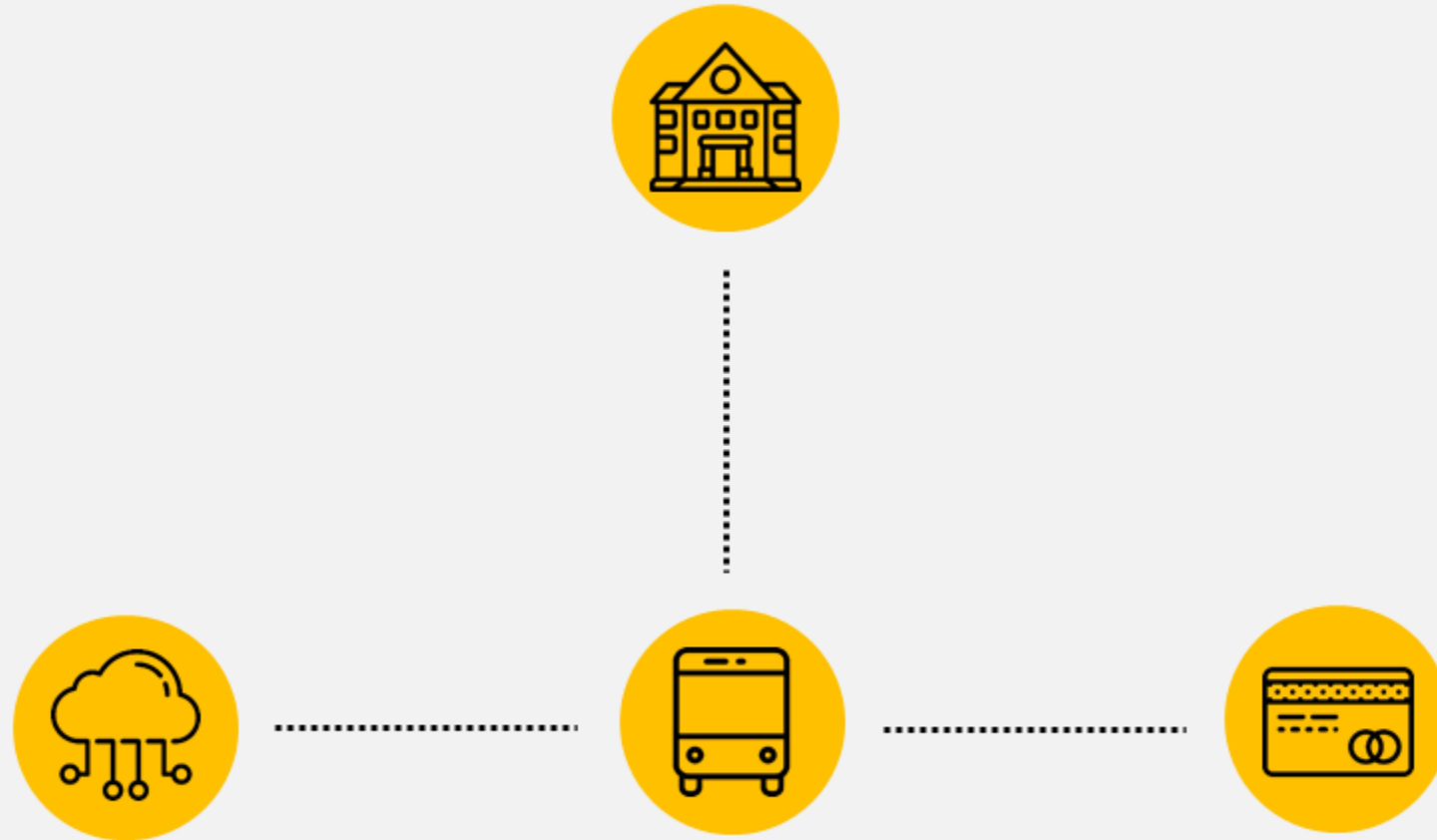
















A tablet with a black bezel is shown at an angle. The screen displays a title screen with a green background featuring diagonal stripes of varying shades. A small, light green airplane icon is visible on the left side of the screen. The title "THE FUTURE OF MOBILITY" is centered in large, white, sans-serif capital letters. Below it, the subtitle "BEN'S JOURNEY" is written in dark green, sans-serif capital letters inside a white rounded rectangle. A white circular home button is located on the right side of the tablet's bezel.

# THE FUTURE OF MOBILITY

BEN'S JOURNEY





# THE FUTURE OF MOBILITY

BEN'S JOURNEY

# **”NILS WUYTENS**

**Researcher**

*Get in touch!*



+32 496 131 592



Nils.Wuytens@ams.ac.be



@NilsWuytens



[www.antwerpmanagementschool.be](http://www.antwerpmanagementschool.be)



  
antwerp  
management school

Powered by the University of Antwerp